




## Victoria Hospitals Foundation has made \$500,000 available to support research projects within Island Health

As part of the \$10 million *Emerge Stronger* fundraising campaign, the Victoria Hospitals Foundation is funding research projects supporting the provision and delivery of care in the South Island and/or Island-wide.

[Catalyst and Seed competitions details are now available, and applications are due January 31, 2021.](#)





### **catalyst grant**

research funding **up to \$100,000** for projects impacting patient care & building research capacity

### **seed grant**

research funding **up to \$10,000** for new & developing health researchers

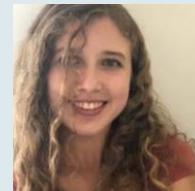
## Knowledge-to-Action Month Recordings

Every November, the Research Department hosts a month of events to share the importance of translating evidence into practice to improve care and outcomes. This year's series focused on achieving clinical excellence through continuous improvement cycles. Watch the event recordings:

- ▶ [Learning from Learning Health Systems: The Emergency Medicine Network & Health Data Platform Partnership](#)
- ▶ [Beyond Quality Improvement to a LHS Framework in Long-Term Care: the LTC QI](#)
- ▶ [Findings from Island Health's Anti-Racism Knowledge Survey: the Foundation for an Effective Strategy](#)
- ▶ [Knowledge Management for Continuous Improvement: Finding the Information Inside Data](#)
- ▶ [Secondary Impacts of COVID-19: Loneliness, Social Isolation & Social Prescribing](#)
- ▶ [Tackling "Rock in Shoe" Problems: Examples of Clinician-Led K2A](#)
- ▶ [Research to Action: the Journey to Game-Based Resilience Education](#)
- ▶ [Relational Elements of Effective Collaborations: Vancouver Island Region's Indigenous COVID-19 Response](#)
- ▶ [2021 Evidence-into-Practice Awards Ceremony](#)

## Volunteers Make a Difference

[This Island Health Magazine article](#) highlights the research volunteer program and spotlights research where volunteers were key to project success.



# Active Studies in Geo 2 and island-wide



Newly Approved Projects (April 1, 2021 - September 30, 2021)	Principal Investigator	Sites	
RUBY ~ Reducing the bURden of Breast cancer in Young women	Baliski Christopher	RJH, V, NRGH	Geo 2
CANVAS Surveillance of Adverse Events Following Immunization among Individuals Immunized with the COVID19 Vaccine	Bettinger Julie	RJH	COVID-19
BC Generations Project	Bhatti Parveen		
Strengthening the Indomitable Spirit in Nursing: Piloting Targeted Resilience Education	Blaney Leigh	NRGH	Geo 2
Care during COVID-19 study ~ A study of patients' perspectives on the impact of COVID-19 on the care and support for British Columbians living with asthma and COPD	Carlsten Christopher		COVID-19
How Can We Help? Examining Asian Canadian's Mental Health Services Utilization	Costigan Catherine	RJH	
iOAT ~ Observational Prospective Study of Injectable Opioid Agonist Treatment	Fairbairn Nadia	Duncan	
ACEi/ARBs oropharynx ca ~ ACEi/ARBs and Survival Outcomes in Squamous Cell Carcinoma of the Oropharynx	Hamilton Sarah	All	
Outcomes of a higher vs. lower hemodialysate magnesium concentration: A pragmatic cluster-randomized clinical trial in hemodialysis centres	Harris Claire	NRGH, RJH	Geo 2
HDC.1: A Phase III Randomized Study of Nivolumab (Opdivo) Plus AVD or Brentuximab Vedotin (Adcetris) Plus AVD in Patients (Age >=12 Years) with Newly Diagnosed Advanced Stage Classical Hodgkin Lymphoma	Hart Jason	All	
Evaluation of Efficacy of Lumbar Erector Spinae Block on Lower Back Pain	Ho Ben	NRGH	Geo 2
Gynae Path Review ~ Evaluation of Pathology Reviews for Gynecologic Cancers	Holloway Caroline	All	
Long-Term Outcomes of Patients with Artificial Iris Implants	Khan Hamza	All	
Chemotherapy response in endometrial cancer	Kwon Janice		
COVID - VITT in BC ~ COVID Vaccine-Induced Immune Thrombotic Thrombocytopenia (VITT): BC Experience	Lee Agnes	All	COVID-19
LA LEAST- Luminal A, Limited Endocrine Adjuvant Systemic Therapy, a phase II trial of abbreviated hormone therapy for low risk hormone receptor positive, HER2 negative early breast cancer.	Lohrisch Caroline	Comox Valley Hospital	
Cannabis and Motor Vehicle Crashes: A Multicentre Culpability Study	MacPherson Andrew	NRGH,	Geo 2
Molecular Classification Cross Canada ~ Molecular classification of endometrial carcinomas: A Canadian study to assess how ProMisE molecular classification will impact management and health resources	McAlpine Jessica	RJH, VGH, SPH	
A Phase 3, Randomized, Double-Blind Study of Adjuvant Immunotherapy with Nivolumab versus Placebo after Complete Resection of Stage IIB/C Melanoma	Metcalf Corey	RJH, CVH	
SPRINT-SARI ~ Short PeRiod IncideNce sTudy of Severe Acute Respiratory Infection	Murthy Srinivas		
Proposal for the Evaluation of Orientation and Training for Nurses Working in Primary Care Practice Settings	Oelke Nelly D.	All	
ASAP-CF ~ Antibiotic Treatment of Staphylococcus Aureus in Stable People with CF	Rayment Jonathan	VGH	
The PREVENT-COVID Study: PRospEctiVe EvaluatiON of immuniTy after COVID-19 vaccines	Sadarangani Manish	RJH	COVID-19
RT CHARM: Phase Iii Randomized Trial Of Hypofractionated Post Mastectomy Radiation With Breast Reconstruction A221505 (MAC23)	Shahid Negin		
WATCH Project ~ We All Take Care of the Harvest: Safe and secure harvesting of marine foods in a changing climate	Swinkels Helena	All	
AI and COVID-19 ~ Profiling and Prognosticating COVID-19 patients Using Big Data: A Pan-Pop-BC Data Artificial Intelligence Study	Tsang Teresa S. M.		COVID-19
LTC media environments ~ Mobilizing meaningful media environments in long-term care: From lived experience to actionable results	Wagner Sarah	All	