


## ▶ Victoria Hospitals Foundation has made \$500,000 available to support research projects within Island Health

As part of the \$10 million *Emerge Stronger* fundraising campaign, the Victoria Hospitals Foundation is funding research projects supporting the provision and delivery of care in the South Island and/or Island-wide.

[Catalyst and Seed competitions details are now available, and applications are due January 31, 2021.](#)





### catalyst grant

research funding **up to \$100,000** for projects impacting patient care & building research capacity

### seed grant

research funding **up to \$10,000** for new & developing health researchers

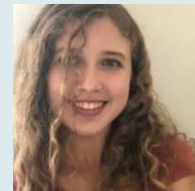
## Knowledge-to-Action Month Recordings

Every November, the Research Department hosts a month of events to share the importance of translating evidence into practice to improve care and outcomes. This year's series focused on achieving clinical excellence through continuous improvement cycles. Watch the event recordings:

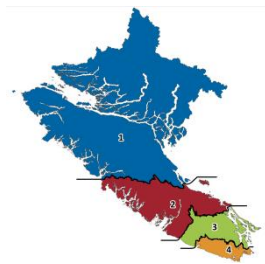
- ▶ [Learning from Learning Health Systems: The Emergency Medicine Network & Health Data Platform Partnership](#)
- ▶ [Beyond Quality Improvement to a LHS Framework in Long-Term Care: the LTC QI](#)
- ▶ [Findings from Island Health's Anti-Racism Knowledge Survey: the Foundation for an Effective Strategy](#)
- ▶ [Knowledge Management for Continuous Improvement: Finding the Information Inside Data](#)
- ▶ [Secondary Impacts of COVID-19: Loneliness, Social Isolation & Social Prescribing](#)
- ▶ [Tackling "Rock in Shoe" Problems: Examples of Clinician-Led K2A](#)
- ▶ [Research to Action: the Journey to Game-Based Resilience Education](#)
- ▶ [Relational Elements of Effective Collaborations: Vancouver Island Region's Indigenous COVID-19 Response](#)
- ▶ [2021 Evidence-into-Practice Awards Ceremony](#)

## Volunteers Make a Difference

[This Island Health Magazine article](#) highlights the research volunteer program and spotlights research where volunteers were key to project success.



# Active Studies in Geo I and island-wide



Newly Approved Projects (April 1, 2021 - September 30, 2021)	Principal Investigator	Sites
CANVAS Surveillance of Adverse Events Following Immunization among Individuals Immunized with the COVID19 Vaccine	Bettinger Julie	RJH
BC Generations Project	Bhatti Parveen	
iOAT ~ Observational Prospective Study of Injectable Opioid Agonist Treatment	Fairbairn Nadia	Duncan Health Unit / Margaret Moss Health Unit
ACEi/ARBs oropharynx ca ~ ACEi/ARBs and Survival Outcomes in Squamous Cell Carcinoma of the Oropharynx	Hamilton Sarah	All
HDC.1: A Phase III Randomized Study of Nivolumab (Opdivo) Plus AVD or Brentuximab Vedotin (Adcetris) Plus AVD in Patients (Age >=12 Years) with Newly Diagnosed Advanced Stage Classical Hodgkin Lymphoma (BoR BC Cancer Agency)	Hart Jason	All
Gynae Path Review ~ Evaluation of Pathology Reviews for Gynecologic Cancers	Holloway Caroline	All
Long-Term Outcomes of Patients with Artificial Iris Implants	Khan Hamza	All
Core Services for Sustainable Rural Hospitals in British Columbia	Kornelsen Jude	N/A
COVID - VITT in BC ~ COVID Vaccine-Induced Immune Thrombotic Thrombocytopenia (VITT): BC Experience	Lee Agnes	All
LA LEAST- Luminal A, Limited Endocrine Adjuvant Systemic Therapy, a phase II trial of abbreviated hormone therapy for low risk hormone receptor positive, HER2 negative early breast cancer. (BCCA BoR)	Lohrisch Caroline	Comox Valley Hospital
A Phase 3, Randomized, Double-Blind Study of Adjuvant Immunotherapy with Nivolumab versus Placebo after Complete Resection of Stage IIB/C Melanoma (CheckMate 76K)	Metcalf Corey	Comox Valley Hospital, RJH
Gathering narratives on emergency medical transport in British Columbia from physicians, decision-makers and patients in rural, remote and Indigenous communities	Oelke Nelly D.	All rural hospitals
Proposal for the Evaluation of Orientation and Training for Nurses Working in Primary Care Practice Settings	Oelke Nelly D.	All
ASAP-CF ~ Antibiotic Treatment of Staphylococcus Aureus in Stable People with CF	Rayment Jonathan	VGH
The PREVENT-COVID Study: PROspEctiVe EvaluationN of immuniTy after COVID-19 vaccines	Sadarangani Manish	RJH
WATCH Project ~ We All Take Care of the Harvest: Safe and secure harvesting of marine foods in a changing climate	Swinkels Helena	All
IN-PoCUS Profiling and Prognosticating COVID-19 patients Using Big Data: A Pan-Pop-BC Data Artificial Intelligence Study	Tsang Teresa S. M.	NRGH, PMH, RJH, VGH, Comox Valley Hospital
LTC media environments ~ Mobilizing meaningful media environments in long-term care: From lived experience to actionable results	Wagner Sarah	All

COVID-19

Geo I

COVID-19

Geo I

Geo I

Geo I

COVID-19

COVID-19

Geo I