


Victoria Hospitals Foundation has made \$500,000 available to support research projects within Island Health

As part of the \$10 million *Emerge Stronger* fundraising campaign, the Victoria Hospitals Foundation is funding research projects supporting the provision and delivery of care in the South Island and/or Island-wide.

[Catalyst and Seed competitions details are now available, and applications are due January 31, 2021.](#)





catalyst grant

research funding **up to \$100,000** for projects impacting patient care & building research capacity

seed grant

research funding **up to \$10,000** for new & developing health researchers



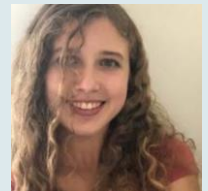
Knowledge-to-Action Month Recordings

Every November, the Research Department hosts a month of events to share the importance of translating evidence into practice to improve care and outcomes. This year's series focused on achieving clinical excellence through continuous improvement cycles. Watch the event recordings:

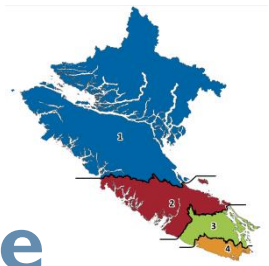
- ▶ [Learning from Learning Health Systems: The Emergency Medicine Network & Health Data Platform Partnership](#)
- ▶ [Beyond Quality Improvement to a LHS Framework in Long-Term Care: the LTC QI](#)
- ▶ [Findings from Island Health's Anti-Racism Knowledge Survey: the Foundation for an Effective Strategy](#)
- ▶ [Knowledge Management for Continuous Improvement: Finding the Information Inside Data](#)
- ▶ [Secondary Impacts of COVID-19: Loneliness, Social Isolation & Social Prescribing](#)
- ▶ [Tackling "Rock in Shoe" Problems: Examples of Clinician-Led K2A](#)
- ▶ [Research to Action: the Journey to Game-Based Resilience Education](#)
- ▶ [Relational Elements of Effective Collaborations: Vancouver Island Region's Indigenous COVID-19 Response](#)
- ▶ [2021 Evidence-into-Practice Awards Ceremony](#)

Volunteers Make a Difference

[This Island Health Magazine article](#) highlights the research volunteer program and spotlights research where volunteers were key to project success.



Active Studies in Cowichan Valley Region and island-wide



Newly Approved Projects (April 1, 2021 - September 30, 2021)	Principal Investigator	Sites	
CANVAS Surveillance of Adverse Events Following Immunization among Individuals Immunized with the COVID19 Vaccine	Bettinger Julie	RJH	COVID-19
Care during COVID-19 study ~ A study of patients' perspectives on the impact of COVID-19 on the care and support for British Columbians living with asthma and COPD	Carlsten Christopher		
How Can We Help? Examining Asian Canadian's Mental Health Services Utilization	Costigan Catherine	RJH	
iOAT ~ Observational Prospective Study of Injectable Opioid Agonist Treatment	Fairbairn Nadia	N/A	
COVID-19 Understanding the Experience of Rural Maternity Care Providers During the COVID-19 Response in British Columbia	Fyfe Trina	CDH, CVH	Geo 3 COVID-19
ACEi/ARBs oropharynx ca ~ ACEi/ARBs and Survival Outcomes in Squamous Cell Carcinoma of the Oropharynx	Hamilton Sarah	All	
Outcomes of a higher vs. lower hemodialysate magnesium concentration: A pragmatic cluster-randomized clinical trial in hemodialysis centres	Harris Claire	RJH, NRGH	
Chemotherapy response in endometrial cancer	Kwon Janice		
COVID - VITT in BC ~ COVID Vaccine-Induced Immune Thrombotic Thrombocytopenia (VITT): BC Experience	Lee Agnes	All	COVID-19
LA LEAST- Luminal A, Limited Endocrine Adjuvant Systemic Therapy, a phase II trial of abbreviated hormone therapy for low risk hormone receptor positive, HER2 negative early breast cancer	Lohrisch Caroline	CVH	
Leading and Lagging Indicators for the Evaluation of Violence Prevention in Healthcare	McLeod Chris		
A Phase 3, Randomized, Double-Blind Study of Adjuvant Immunotherapy with Nivolumab versus Placebo after Complete Resection of Stage IIB/C Melanoma (CheckMate 76K)	Metcalf Corey	RJH, CVH	
Proposal for the Evaluation of Orientation and Training for Nurses Working in Primary Care Practice Settings	Oelke Nelly D.	All	
The PREVENT-COVID Study: PRospEctiVe EvaluatiON of immuniTy after COVID-19 vaccines	Sadarangani Manish	RJH	COVID-19
AI and COVID-19 ~ Profiling and Prognosticating COVID-19 patients Using Big Data: A Pan-Pop-BC Data Artificial Intelligence Study	Tsang Teresa S. M.		COVID-19
The RESPCCT Study ~ Research Examining the Stories of Pregnancy of and Childbearing in Canada Today	Vedam Saraswathi	VGH, Lady Minto/ Gulf Islands Hospital	Geo 3