

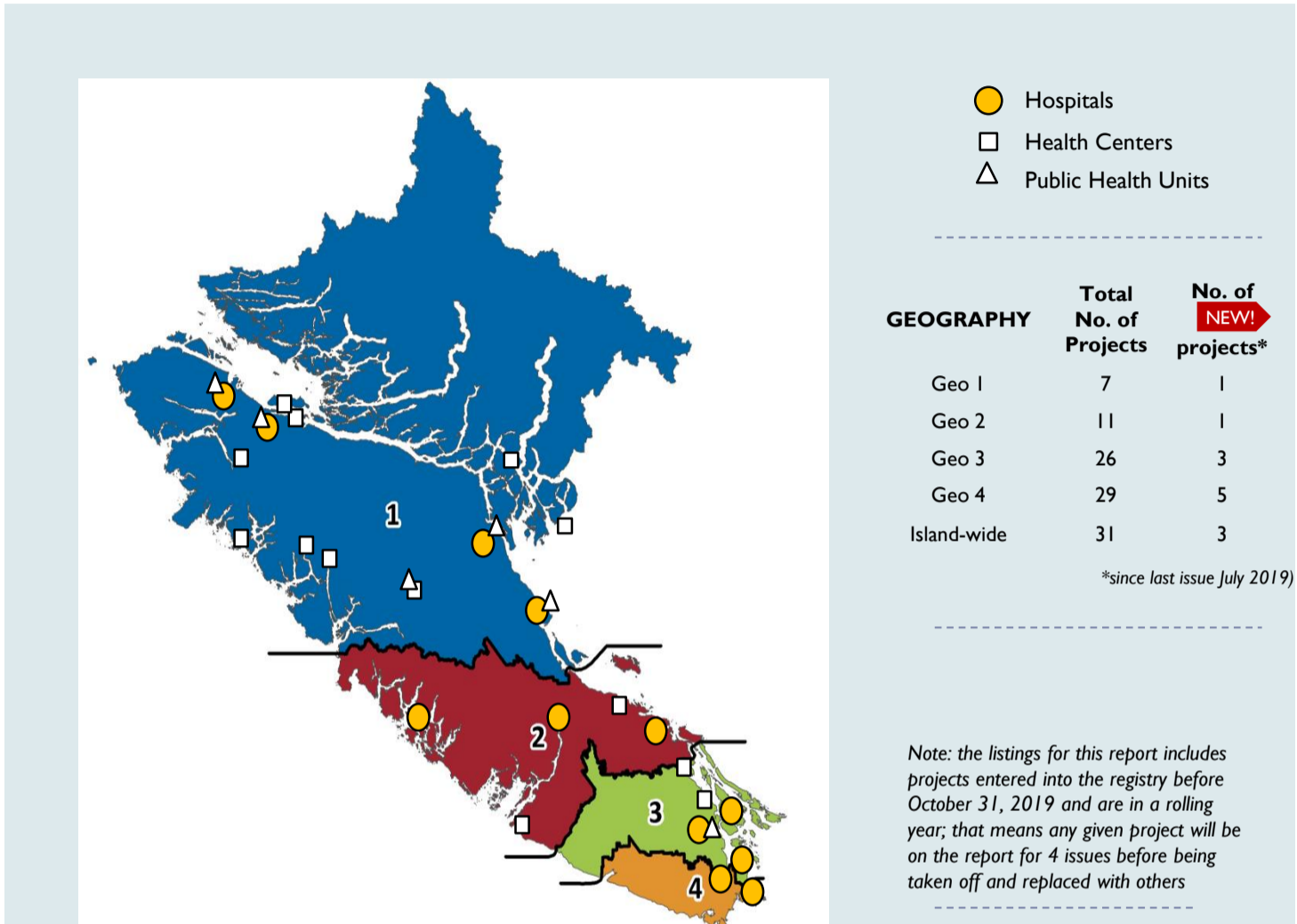
# QI for You & I:

Building Community & Capacity for Quality Improvement

Island-wide Summary of QI Projects | Issue #6 | November 2019



## What communities are engaging in QI?



## Where are we at?

The [QI Registry](#) has been live for over one year and currently holds about **104 Island Health QI projects!** Included on the following pages are listings of the self-reported projects currently housed within the registry database from the last 4 issues.

To access the QI registry, click [HERE](#) or look for this button on the Quality homepage



## Is my project QI or Research?

Many people do not realize that our national guidance on research with human participants, the Tri Council Policy Statement (TCPS2 (2018) includes an exemption from human ethics review. [Article 2.5](#) makes a clear distinction between research which does need ethical review when it involves human participants (themselves, their data, or their biological specimens), and activities that are “normally administered in the ordinary course of the operation of an organization where participation is required”. Activities such as quality improvement, assessment, program evaluation, for example, are exempted because their purpose is different from research, and they involve different standards of consent, “such activities do not normally follow the consent procedures outlined in this policy” (TCPS2, Article 2.5, Application section). However, this is not to say that these activities do not have ethical issues, they “may still raise ethical issues that would benefit from careful consideration by an individual or a body capable of providing some independent guidance, other than an REB” but they are outside the scope of research ethics review. Institutions may provide another way to review or ensure that those exempted projects do have an ethical oversight or process for their consideration. At Island Health, the use of the ARECCI tool allows the QI Ethics process to take place. This provides a helpful consultation where necessary to assist with mitigating risks and highlight potential issues in these activities.

If you are conducting a project that is QI or you think is, reach out to the QI Ethics team. We are happy to walk you through the processes, and help you register your QI project in the QI Registry. [qiethics@viha.ca](mailto:qiethics@viha.ca)

Questions? Email [qiethics@viha.ca](mailto:qiethics@viha.ca)

# QI Project Listings

## Geography I:

Project Title	Project Aim	Project Lead	Sites Involved	Programs Involved	Keywords
<b>Comox Valley Hospital: Telemetry Unit Optimization.</b>	This project aims to collect helpful data that describes unit operations, reduce boarding time by 50% one year post implementation, have at least 80% of the staff feel that the changes improve unit administration. We do not expect to have sufficient power to see a significant mortality benefit but will track this variable for interest.	Samuel Kohen	Comox Valley Hospital	Adult Intensive Care (ICU), Emergency Services, Heart Health, Other	Telemetry, closed unit, quality improvement
<b>NEW!</b>					
<b>Patients who are 70 years and older with one complex medical problem at CRH up in a chair for breakfast</b>	To increase the number of patients who are 70 years and older with one complex medical problem at CRH up in a chair for breakfast by 50% as of August, 2019.	Dr. Kathleen McFadden	Campbell River Hospital	Adult Intensive Care (ICU) , General Support (Housekeeping/Food Services/Laundry) , Professional Practice & Learning , Quality, Safety and Experience , Seniors & Spiritual Health	
<b>Admission and Discharge Planning, North Island Hospital</b>	Improve patient flow and create bed capacity	Greg Gilks	Campbell River Hospital , Comox Valley Hospital , Campbell River Health Unit	Aborig Health , Access and Transitions , Emerg Services , General Support, Home and Com. Care , Infection Prevention & Control , MHSU, Pharmacy Services , Com. Health and Care , Quality, Safety and Experience , Surgical Services	Admissions; Discharges; DVM; HHI; Culture
<b>Frontline Nurse's Feelings Towards Wound Care</b>	Gain insight into frontline nurses feelings towards wound care and determine what supports/resources they recommend.	Melissa Aydon	CRG, Home & Com. Care		Wound Care Comfort Best Practice Education Support
<b>Ethics Support for Registered Nurses in Geo I</b>	To reduce moral residue and increase job satisfaction for registered nurses in Geo I.	Hayley Dickinson	All Geo I Hospitals, Health Centers and Health Units, Home & Community Care, Residential Care Facilities	Emergency Services, Home & Com Care, Res Services, MHSU, Profess. Practice, Public Health, Quality & Safety, Research	

Questions? Email [qiethics@viha.ca](mailto:qiethics@viha.ca)

# QI Project Listings

## Geography 2:

Project Title	Project Aim	Project Lead	Sites Involved	Programs Involved	Keywords
<b>Exploring Improvements in Malnutrition Rates of hospitalized patients using IHealth</b>	The aim is to highlight how dietitian referrals improve malnutrition rates and how IHealth has helped increase patient referrals to dietitians. I also want to provide an opportunity for Island Health leaders to remind readers about the continued risk of malnutrition of patients admitted into acute care settings and how these rates can be decreased.	Wendy Young	Nanaimo Regional General Hospital		Malnutrition; IHealth; Informatics; Dietitian; Acute care
<b>Developing a framework for providing pediatric care for marginalized children and their families at Georgia Avenue Elementary School in Nanaimo</b>	100% of children who meet referral criteria by the school-based team (SBT) at Georgia Avenue Elementary School will be referred for pediatric consult through a standardized process.	Wilma Arruda	Other	Aboriginal Health , Community Health and Care , Public Health , Child, Youth and Family	pediatric consultation; school-based; community; referrals; standardization
<b>Engaging Family Physicians in End of Life</b>	The aim of this project is to gain a better understanding of what the barriers are for Family Physicians to provide ongoing palliative and end of life care.	Tara McCallan	Other	Access and Transitions	Family Physician, End of Life care, Continuity of Care
<b>NRGH C. Difficile Root Cause Analysis</b>	There is a need for a deep dive to determine relationships between over-census numbers, patient placement and movement, seasonal (influenza) surges and C. diff, as well as measurable and sustainable improvements.	Margarita Shabanova	Nanaimo Regional General Hospital	Facilities, Maintenance & Operations , General Support (Housekeeping/Food Services/Laundry) , Infection Prevention & Control , Quality, Safety and Experience	
<b>Linen Utilization at NRGH Renal (Green Belt project)</b>	Reduce the environmental cost of linen used for keeping clients warm during treatment by 30%, while maintaining or improving clients' satisfaction.	Pan Ting	Nanaimo Regional General Hospital	General Support (Housekeeping/Food Services/Laundry) , Quality, Safety and Experience , Renal Services	
<b>WCGH Inpatient Laboratory requisitions: Decrease the time needed to phone clinical areas due to incomplete ordering/copy to physician information.</b>	To reduce the amount of calls that are needed to confirm the correct physician information as ordering or copy to providers. The target is to have 98% compliance over a period of 12 months.	Karin Cook	West Coast General Hospital	Adult Intensive Care (ICU) , Ambulatory Care and Medicine Quality , Emergency Services , Surgical Services	Requisition; Laboratory; Inpatient
<b>Use of iHealth to improve in-hospital insulin ordering</b>	Decrease % of orders with correction only rapid acting insulin	David Miller	NRGH, RJH & VGH	Pharmacy Services , Research and Capacity Building	insulin; diabetes; iHealth; electronic ordering

NEW!

Questions? Email [qiethics@viha.ca](mailto:qiethics@viha.ca)

# QI Project Listings

## Geography 3:

Project Title	Project Aim	Project Lead	Sites Involved	Programs Involved	Keywords
<b>Assessment of perceived care needs of people using substances on the Saanich Peninsula.</b>	I hope to use the results from this project to develop addiction care resources in the Saanich Peninsula area.	Kelsey Roden	Saanich Peninsula Hospital	Aboriginal Health, Emergency Services, Mental Health & Substance Use, Research and Capacity Building	Addiction medicine Health care delivery Health equity Saanich Peninsula Hospital Substance use
<b>Ladysmith Health Center Patient Survey Kiosk</b>	Consistently improve patient satisfaction scores at Ladysmith Health Center. (targets to be determined)	Brenda Aguiar	Ladysmith Community Health Centre	Adult Rehabilitation Services, Home and Community Care, Quality, Safety and Experience, Other	Patient; centered; care; patient; input
<b>Patient education for financial end of life planning</b>	Improve patient education for financial resources so they can access resources in a timely manner to maximize care at end of life	Valorie Masuda	Duncan Health Unit / Margaret Moss Health Unit, Ladysmith Health Unit, Lake Cowichan Health Unit	End of Life Care, Finance, Home and Community Care	Patient education ;financial planning; end of life
<b>Improving Access &amp; Positive Patient Experience with Post-Stroke Care in the Cowichan Valley</b>	To increase patient access to post-stroke care in the Cowichan Valley by May 2020.	Tara Pollock	Cowichan District Hospital , Victoria General Hospital	Library Services	Stroke; Rehabilitation; Cowichan
<b>Medical Day Care at Ladysmith Community Health Center</b>	Continue to meet the needs of the Kristen community on a long term basis by Grovum offering these services in one place.		Ladysmith Community Health Centre	Access and Transitions , Emergency Services , Home and Community Care , Community Health and Care , Quality, Safety and Experience	Creating Capacity Building Patient and Staff Experience
<b>Action for Virtual Care</b>	To reduce (by 10%) transfers to ED for the residents at Sunridge Place associated with the Cowichan Way Clinic, by enabling them with virtual tools over 12 months of initiating the project.	Margarita Loyola	CDH, Residential Care Facilities	Emergency Services, IM/IT & Residential Services	
<b>Duncan Ambulatory Clinic Processes Optimization</b>	Increase number of visits, and the number of clients that the clinic can accept each month	Afshin Shamshiri	Duncan Health Unit/Margaret Moss Health Unit, Home and Com. Care	Ambulatory Care and Medicine Quality, Home & Com Care, Pharmacy, Community Health	
<b>Early Identification of Clients at Risk of Hospitalization</b>	Reduce ALC conversion at SPH	Sia Zabaraz & Sheila Leadbetter	Home and Com. Care Sites in GEO 3	Access and Transitions, Communications, Home & Com Care, Com. Health	

Questions? Email [qiethics@viha.ca](mailto:qiethics@viha.ca)

# QI Project Listings

## Geography 4:

Project Title	Project Aim	Project Lead	Sites Involved	Programs Involved	Keywords
<b>GHB Withdrawal Protocol for Victoria Detox</b>	This project will help to improve staff education and to standardize management of GHB patients in a manner similar to other withdrawal management protocols currently employed at Detox. This will create a clearer process for triaging and referring these patients, and will hopefully reduce admissions for this presentation.	Bill Bullock	Royal Jubilee Hospital	Emergency Services, Mental Health & Substance Use	GHB withdrawal protocol detoxification substance use
<b>NEW!</b>					
<b>Exploring Improvements in Malnutrition Rates of hospitalized patients using IHealth</b>	The aim is to highlight how dietitian referrals improve malnutrition rates and how IHealth has helped increase patient referrals to dietitians. I also want to provide an opportunity for Island Health leaders to remind readers about the continued risk of malnutrition of patients admitted into acute care settings and how these rates can be decreased.	Wendy Young	Royal Jubilee Hospital		Malnutrition; IHealth; Informatics; Dietitian; Acute care
<b>NEW!</b>					
<b>Development of a BPMH Quality Audit Framework</b>	- Develop a quality audit tool(s) and a process that could be implemented within Island Health Pharmacy Department - Pilot the audit tools with BPMHs documented by pharmacy technicians	Curtis Harder	Royal Jubilee Hospital, Victoria General Hospital	Emergency Services, Pharmacy Services	BPMH; best possible medication history; medication list; quality
<b>NEW!</b>					
<b>Rooming-in Project @ VGH</b>	Reduce of 50% the NICU admission rate of babies exposed in utero to opiates born to medically stabilized mothers for reasons related to neonatal abstinence syndrome (example: exclude prematurity, need of IV antibiotics, etc.)	Marie-Noelle Trottier-Boucher	Victoria General Hospital	Aboriginal Health, Child, Youth and Family	Rooming-in Neonates exposed to opiates
<b>NEW!</b>					
<b>Update of the "Review of IH Substance Use Services System" (including cataloguing of QI projects, heat map and patient journey mapping)</b>	To review previous recommendations made to strengthen Substance Use services in order to increase access for clients to these services. Increasing access will reduce wait times, increase quality of life, and decrease illness/mortality.	Hayley Porteous		Access and Transitions, Information Management/Information Technology (IMIT), Mental Health & Substance Use, Community Health and Care, Risk Management and Legal Affairs	1. Quality and Accountability; 2. Collaboration; 3. Improving Access; 4. Best Practice; 6. Broad Systems Approach
<b>NEW!</b>					

Questions? Email [qiethics@viha.ca](mailto:qiethics@viha.ca)

# QI Project Listings

## Geography 4 continued:

Project Title	Project Aim	Project Lead	Sites Involved	Programs Involved	Keywords
<b>Reducing Inappropriate Blood Prescribing in Acute Care</b>	Reduce inappropriate prescribing by 5% (RJH or VGH) over 9 months by ensuring CSA standards are met, patient safety is managed and indications for each product and component reflect current evident based practice.	Chaundra Willms	Royal Jubilee Hospital , Victoria General Hospital	Laboratory Medicine , Professional Practice & Learning	blood product; CSA; patient safety; inappropriate prescribing; nurse practitioner
<b>Faces of Motherhood: Supporting Women in Pregnancy Affected by Substance Use</b>	We will improve identification by 100% for pregnant women who use substances and who wish to access maternity and addiction care at VGH, RJH and in the community by August 2019	Sarah Lea	Royal Jubilee Hospital , Victoria General Hospital , Mental Health and Addiction Services	Emergency Services , Mental Health & Substance Use , Community Health and Care , Public Health , Child, Youth and Family	pregnancy; addiction; maternity; illicit substances; gestation
<b>Assessment and verification of dried blood spot bio sampling</b>	Assess and implement a workflow in laboratory medicine to allow dried blood spot collection and analysis	Michael Chen	Victoria General Hospital	Laboratory Medicine	dried blood spot; blood collection; patient safety; efficiency; effectiveness
<b>Impact of Standardized Medication Teaching Videos on Patient and Clinician Satisfaction</b>	To quantify the impact of standardized medication teaching videos on both patient and clinical staff experience. Anticipated benefits: 1. Patients - Understand how the use of thorough, reproducible medication teaching using standardized videos impacts patients 2. Healthcare Providers - Understand how the use of thorough, reproducible medication teaching using standardized videos impacts healthcare professionals Organization - Inform a business plan for the Health Authority to acquire the technology to spread the videos to other hospitals if the current videos are positively impacting patients and clinicians.	Kendra Huculak	Royal Jubilee Hospital	Heart Health , Pharmacy Services , Other	Standardized; medication; teaching; optimization; accessibility

► Questions? Email [qiethics@viha.ca](mailto:qiethics@viha.ca)

# QI Project Listings

## Geography 4 continued:

Project Title	Project Aim	Project Lead	Sites Involved	Programs Involved	Keywords
<b>Improving care for neonates with neonatal abstinence syndrome (NAS) at Victoria General Hospital</b>	Our goal is to bring key stakeholders in perinatal/neonatal medicine (acute care and community) together for a series of meetings to discuss barriers & facilitators to a full "rooming-in model", which will provide us with the knowledge needed to effectively move forward with a redesign of the current care model to increase the number of medically stable opiate-exposed neonates rooming-in with their mothers to 100% over a 12 month period.	Katrina Stockley	Victoria General Hospital	Aboriginal Health , Community Health and Care , Quality, Safety and Experience , Child, Youth and Family	neonatal; neonatal abstinence syndrome(NAS); rooming-in; maternal substance use in pregnancy; opioid crisis
<b>Facial Recognition as Positive Patient Identification in Residential Care</b>	Determine the feasibility of implementing Smartphone enabled facial recognition for positive patient identification in long term care facilities.	Sean Spina	Residential Care Facilities	Communications , Residential Services	residential care; long term care facility; positive patient identification; facial recognition; closed loop medication system
<b>The INTERRUPT Quality Improvement Study: An Assessment of Interaction Alert Fatigue Among Pharmacists at a Tertiary Care Centre</b>	Identification of specific alert pairs which are likely clinically insignificant and which may contribute to alert fatigue.	Naa Adjintettey	Royal Jubilee Hospital , Saanich Peninsula Hospital , Victoria General Hospital	Information Management/Information Technology (IMIT) , Pharmacy Services	interaction; alert; fatigue; pharmacist; tertiary
<b>ECT QI project</b>	This project includes multiple aims. Our first AIM is to collect 3 months worth of data on patients regarding the process of referral. This would consist of the dates each step was completed. After 3 months we will see which steps are hindering the system and make small PDSA cycles for each step. Our overall goal will be to reduce wait times by 20% over the next year. Another AIM is that we want to improve patient education and capacity assessments.	Hannah Burton	Royal Jubilee Hospital		ECT QI redcap Victoria
<b>Design and Implementation of Coronary Care Unit Patient Acuity-Intensity Scoring Tool</b>	A consistent and effective 'real-time' method of informing clinical providers (and administration) of patient needs to: (a) ensure that patients are receiving the appropriate level of care at the right time and location; (b) ensure that appropriate staff are available to provide care; and, (c) communicate to other health providers (both Heart Health and other key stakeholders on CCU status at any given time.	Laura Shaw	Royal Jubilee Hospital	Heart Health	
<b>Cognitive Health Initiative - Specialist Cognitive Service</b>	Explore service redesign through physician engagement for improved assessment and diagnosis of dementia with specialist services in outpatient care settings through the establishment of a dedicated memory service.	Kristine Votova	RJH	Neurosciences , Com. Specialist Health & Care, Research & Capacity Building , Seniors & Spiritual Health	Specialist Memory Service; Seniors outpatient care; dementia; rapid learning health systems;

Questions? Email [qiethics@viha.ca](mailto:qiethics@viha.ca)

# QI Project Listings

## Geography 4 continued:

Project Title	Project Aim	Project Lead	Sites Involved	Programs Involved	Keywords
<b>Critical Congenital Heart Defect Screening chart audit</b>	If the qualitative data suggests that a large percentage of newborns are being screened outside the optimal time possible due to early discharge there may be a need to ensure these newborns are follow up and re-screened in community and what would this look like.	Margaret (Peggy) Quigg	VGH	Other, Child, Youth and Family	CCHD Screen time 1; newborn age 2; discharge age 3; result 4; follow-up 5
<b>Administration of Prophylactic Antibiotics during Cardiac Device Implantation (EP Lab)</b>	Achieve at least 90% adherence to administering prophylactic antibiotics.	Laura Shaw	RJH	Heart Health	infection; prevention; prophylactic; antibiotics; CPSI SSI bundle
<b>Senior Friendly Hospital Improvement at VGH</b>	The VGH GEM team will support ward teams in providing evidence based senior friendly care by implementing care process monitoring and improvement strategies. 100% of GEM care recommendations will be followed by care teams by March 2019.	Jennifer Oates	VGH	Seniors & Spiritual Health	frail; elderly; senior; acute care
<b>Antimicrobial Prescribing Point Prevalence Survey</b>	After completing this one day prevalence survey, the antimicrobial stewardship program would know which drugs, patient areas or indications might benefit from a review and feedback the most.	Jolanta Piszczek	RJH		antimicrobials; appropriateness; survey; prescribing; pharmacy
<b>Use of iHealth to improve in-hospital insulin ordering</b>	Decrease % of orders with correction only rapid acting insulin	David Miller	NRGH, RJH & VGH	Pharmacy Services , Research and Capacity Building	insulin; diabetes; iHealth; electronic ordering
<b>Surgical Optimization: Smoking Cessation in Pre-arthroplasty patients</b>	By May 30th of 2018, the self reported pre-operative smoking cessation rate for identified smokers booked for hip and knee arthroplasty in Victoria will be increased by 50%.	James McInnes	RJH & VGH	HR, Logistics & Ops, Mental Health and Sub Use, Pharm Services , Public Health, Quality & Safety, Respiratory Health, Surg Services	pre-surgical; patient optimization; smoking cessation; arthroplasty; orthopaedic surgery

Questions? Email [qiethics@viha.ca](mailto:qiethics@viha.ca)



# QI Project Listings

## Island Wide Projects:

Project Title	Project Aim	Project Lead	Sites Involved	Programs Involved	Keywords
<b>The AED project. Improving access of AED info for out of hospital arrest patients admitted to CCU.</b>	The AED project. Improving access of AED info for out of hospital arrest patients admitted to CCU.	The AED project. Improving access of AED info for out of hospital arrest patients admitted to CCU.	The AED project. Improving access of AED info for out of hospital arrest patients admitted to CCU.	The AED project. Improving access of AED info for out of hospital arrest patients admitted to CCU.	The AED project. Improving access of AED info for out of hospital arrest patients admitted to CCU.
<b>NEW!</b>					
<b>Improving diagnosis of iron disorders</b>	Improving diagnosis of iron disorders	Improving diagnosis of iron disorders	Improving diagnosis of iron disorders	Improving diagnosis of iron disorders	Improving diagnosis of iron disorders
<b>NEW!</b>					
<b>Patient Safety Incident Disclosure and Ethics: A Community Simulation</b>	Our aim is to increase the awareness and understand of the Island Health Patient Safety Incident Disclosure Procedure and the associated Framework for Ethical Decision Making, within the community at large and within the health care and academic community.	Darin Abbey		Quality, Safety and Experience, Other	Disclosure; Patient Safety Incident, Ethics, Community, Simulation
<b>NEW!</b>					
<b>Understanding vaping and e-cigarette use in Island Health Schools</b>	The aim of this project is to determine: 1) How extensive the problem of vaping and e-cigarette use is within the jurisdiction of Island Health. 2) What policies school districts have regarding vaping and e-cigarette use. 3) What resources and supports offered by Island Health school districts have accessed in their response to vaping and e-cigarette use, and whether they have been helpful. 4) What additional supports or programs school districts would like to see provided by Island Health.	David Mcvea		Public Health , Child, Youth and Family	e-cigarettes; vaping; tobacco control;

Questions? Email [qiethics@viha.ca](mailto:qiethics@viha.ca)

# QI Project Listings

## Island Wide Projects continued :

Project Title	Project Aim	Project Lead	Sites Involved	Programs Involved	Keywords
<b>Policy on standards for suspected and confirmed spinal injured patients</b>	<p>Policy on standards for suspected and confirmed spinal injured patients: To ensure that competencies, roles and responsibilities and organisational expectations are clearly defined.</p> <ul style="list-style-type: none"> <li>• Management of Suspected Cervical Spinal Injury: PolyTrauma Adult (&gt; age 16) Guideline: To provide recommendations for diagnostic imaging and clearance of suspected cervical spine injury in polytrauma patients with a dangerous mechanism of injury.</li> <li>• Management of suspected Thoracolumbar Spinal Injury: PolyTrauma Adult (&gt; age 16) Guideline: To provide recommendations for diagnostic imaging and clearance of suspected thoracolumbar spine injury in polytrauma patients with a dangerous mechanism of injury.</li> <li>• Procedure for Adult Spine Handling - Suspected or confirmed spine injury: To provide directions for all clinicians required to manually immobilize the cervical, thoracic, lumbar and/or sacral spine in order to reposition, roll or laterally transfer any adult patient with a known or suspected spine injury.</li> <li>• Lateral Transfer Decision Support Tool to provide guidance on choosing the type of transfers that best meets the presenting conditions and factors.</li> </ul>	John-Marc Priest	Campbell River Hospital , Cowichan District Hospital , Lady Minto/Gulf Islands Hospital , Nanaimo Regional General Hospital , Port Hardy Hospital , Port McNeill Hospital , Royal Jubilee Hospital , Saanich Peninsula Hospital , Tofino General Hospital , Victoria General Hospital , Comox Valley Hospital , West Coast General Hospital	Adult Intensive Care (ICU) , Adult Rehabilitation Services , Emergency Services , Home and Community Care , Medical Imaging , Neurosciences , Occupational Health and Safety , Trauma Care	
<b>Examination of patient safety incident disclosure reporting at Island Health</b>	<p>Measure the extent to which disclosure of patient safety incidents where serious harm and death is occurring, identify the impediments to reporting disclosure in PSLS, and develop strategies aimed at increasing disclosure reporting frequency for serious harm and death events by March 2019.</p>	Fiann Crane	Other	Quality, Safety and Experience	Safety; disclosure; reporting; incidents; harm
<b>Bereavement Support: Attitudes and Expectations MAiD</b>	<p>To explore the current practice, beliefs and expectations of physician Prescribers and Assessors of Medical Assistance in Dying (MAiD) regarding the bereavement support they offer (or may not) to family/friends of the deceased at the time of and following an assisted death. Goals regarding bereavement support:</p> <ul style="list-style-type: none"> <li>• To identify the current practice of MAiD Prescribers and Assessors.</li> <li>• To understand the beliefs of MAiD Prescribers and Assessors about their responsibility in this regard.</li> <li>• To explore the comfort level of MAiD Prescribers and Assessors.</li> <li>• To identify strengths, gaps and challenges experienced by MAiD Prescribers and Assessors.</li> <li>• To explore what resources could be offered or developed to support Prescribers and Assessors.</li> </ul>	Rosanne Beuthin		End of Life Care	Bereavement support; death and dying; medical assistance in dying (MAiD); physician practice

Questions? Email [qiethics@viha.ca](mailto:qiethics@viha.ca)

# QI Project Listings

## Island Wide Projects continued :

Project Title	Project Aim	Project Lead	Sites Involved	Programs Involved	Keywords
<b>Design and Implementation of Coronary Care Unit Patient Acuity-Intensity Scoring Tool</b>	A consistent and effective 'real-time' method of informing clinical providers (and administration) of patient needs to: (a) ensure that patients are receiving the appropriate level of care at the right time and location; (b) ensure that appropriate staff are available to provide care; and, (c) communicate to other health providers (both Heart Health and other key stakeholders on CCU status at any given time.	Laura Shaw	Royal Jubilee Hospital	Heart Health	
<b>Case Definitions and Severity Stratification for Surveillance of Mental Health : Substance Use Disorders in British Columbia - focus on opioid overdose</b>	(1) Identify patterns of service engagem. associated with opioid overdose (2)Identify prevention opport. (3) Identify clusters of services that target the needs of pts who overdose on opioids	Andriy Koval	Mental Health and Addiction Services	Other	opioid overdose; encounter profiles; transactional data; health trajectory, prevention
<b>Reduction of Heart Failure Readmissions within 30-days</b>	To review Island Health data and determine if meeting CCS guidelines.	Claire Mackelson			Heart Failure; readmission visits; CIHI data
<b>Prevent and Reduce Open Heart Surgical Site Infections</b>	Reduce incidence of open heart surgery surgical site infections to meet CCS standards.	Laura Shaw	ALL Island Health hospitals	Heart Health , Infection Prevention & Control	CPSI SSI Bundle; surg, site infections; prevention; surveillance
<b>STEMI QA program</b>	Achieve 90% adherence of all STEMI efficiency benchmarks.	Laura Shaw	ALL Island Health hospitals	Emergency Services , Heart Health , Other	CCS benchmarks; CSBC benchmarks; efficiency of STEMI care pathway
<b>Imminently Dying Clinical Order Set and Care Plan</b>	(1) Acute care providers and staff will use the <i>PALL Imminently Dying Orders &amp; Final Days Care Plan Practice Resource</i> to provide pts with consistent & compassionate care (2) Initiation & discontinuing of <i>PALL Imminently Dying Clinical Order Sets (COS)</i> in line with COS patient criteria (3) Evidence of conversations held with pt/family about prognosis of last days & document. of the discussions (4) Evidence of use of standardized medications in the COS with provision of individualized orders (5) Effective implementation of medications & care of pt/family in final days.	Della Roberts	VGH, CVH & WCGH	End of Life Care , Pharmacy Services	Clinical Order Set End-of-Life Imminent Dying



Questions? Email [qiethics@viha.ca](mailto:qiethics@viha.ca)