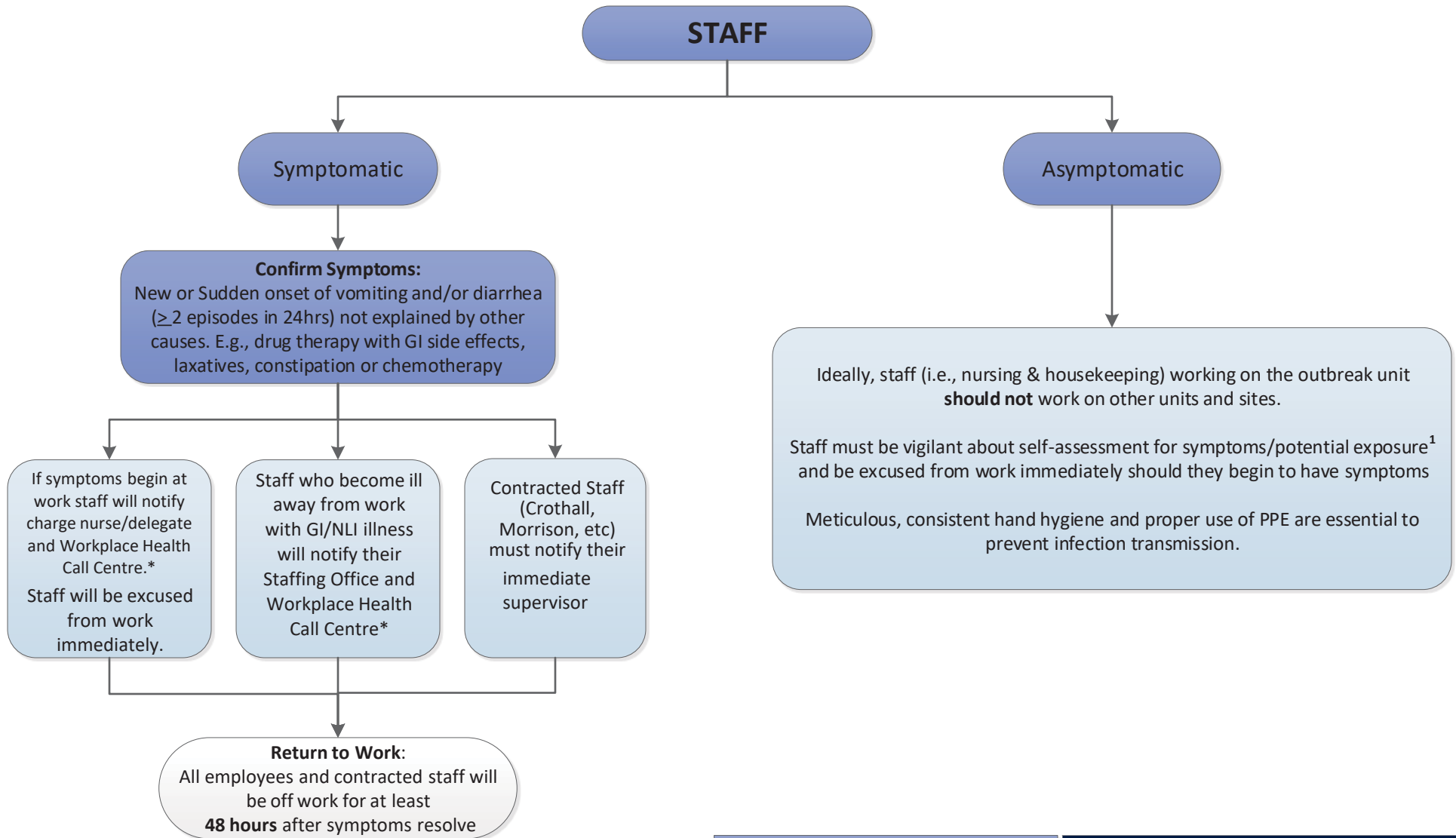


# Acute Care Front Line Staff: GI/NLI Outbreak Identified

NLI-AC-4  
Revised: 25-Nov-2019



\*Workplace Health Call Centre  
Call 1-866-922-9464

After hours: leave a message with  
your contact information

<sup>1</sup>In a facility with an outbreak in one unit, remember that GI illness may show up in other areas as well. Exposure to Norovirus can also occur in the community.

For those staff members whose job takes them occasionally to multiple areas (physiotherapy, occupational therapy, laboratory, FMO, etc), you should start your rounds in a non-outbreak area whenever possible and be vigilant in monitoring for symptoms. **The outbreak area should be your last stop**