

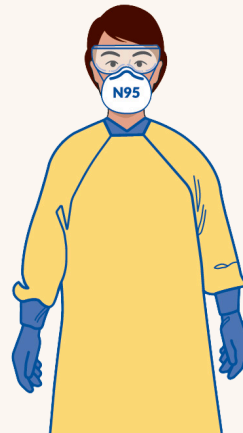
Measles in Primary Care

Suspected measles is reportable!
Please notify the Communicable Disease (CD) Unit ASAP.
SI 250-388-2225 CI 250-740-2615 NI 250-331-8555
After Hours/Weekends: 1-800-204-6166

Any suspect case should be asked to isolate and await direction from Public Health.

Symptom Screening

- Screen all clients for communicable disease symptoms upon arrival to the clinic and when booking appointment.
- **Clients with compatible symptoms should wear a medical mask and be placed directly into a private room with the door closed.** Do not leave them in the waiting room.
- The suspicion of measles is higher in people who have recently traveled or had contact with a known case and/or are not fully immunized.



Staff PPE & Cleaning

- Wear a **N95 mask**.
- Wear eye protection, gown and gloves in case the client has another viral illness.
- If the client is not able to consistently wear a mask, leave the room empty for 2 hours after they leave.
- Do an “Additional Precautions” clean of the room afterwards.



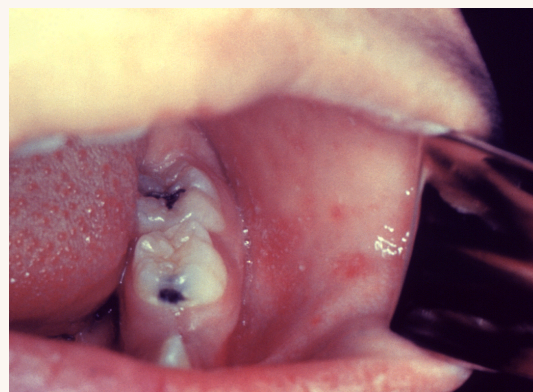
Testing - Collect:

- NP or throat swab for measles PCR up to 8 days after onset of rash. Use the viral transport media (red top swab if NP). **Collect in clinic and refrigerate.**
- Urine for PCR up to 14 days after the onset of the rash. Refrigerate.
- Serology for Measles IgM & IgG, Parvovirus B19 IgM, and Rubella IgM. **Have patient/parent call lab in advance for infection prevention instructions.**

Early Symptoms

Early symptoms usually last about 2-4 days. They include:

- Fever
- Runny nose
- Cough
- Red and watery eyes
- Small white spots inside the cheeks (Koplik Spots)



CDC/Heinz F. Eichenwald, MD

The Rash

- The maculopapular rash begins 3 days after early symptoms.
- It usually starts on the face and upper neck.
- It spreads over about 3 days, eventually to the hands and feet.
- It lasts 4-7 days before fading.



About Measles

- Measles is extremely contagious.
- **Measles is vaccine preventable** (98% immunity with two doses)!
- Transmitted via airborne droplets and direct contact with nasal and throat secretion of an infected client.
- Clients are contagious from 4 days BEFORE the rash on to 4 days AFTER the rash onset.
- The incubation period is 7-21 days.
- Complications of infection include:
 - 1 in 10 cases: ear infections & pneumonia
 - 1 in 1000 cases: encephalitis (can result in seizures, deafness, & brain damage)
 - 1 in 3000 cases: death from complications
 - 1 in 100 000 cases: subacute sclerosing panencephalitis (SSPE)