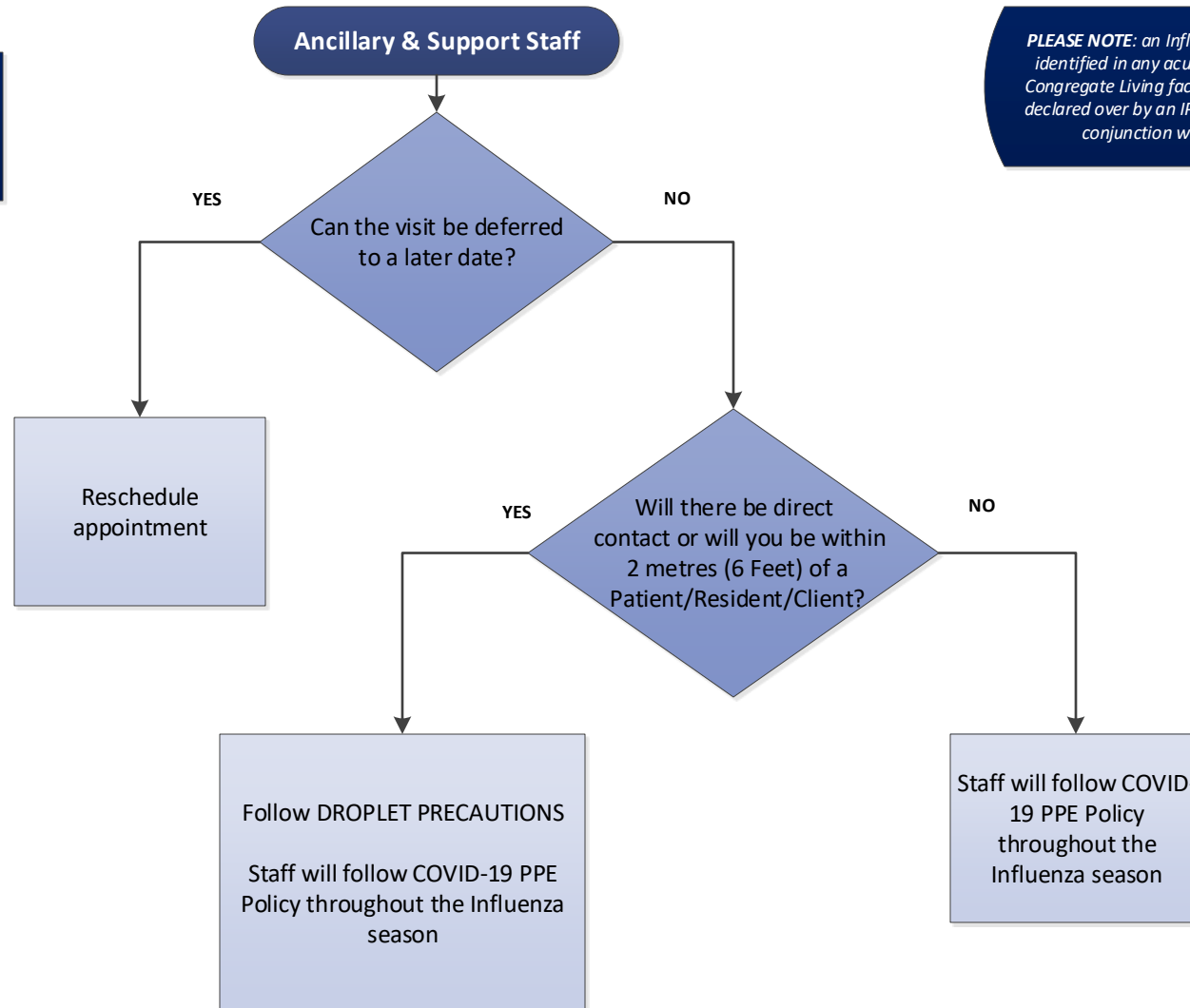


# Influenza Like Illness Outbreak (Not Including COVID-19\*) Identified in Acute Care/ Residential/Congregate Living Setting for Ancillary & Support Staff

\*For COVID-19, please follow Island Health's COVID-19 Protocols

**PLEASE NOTE:** an Influenza outbreak identified in any acute/residential/ Congregate Living facility will **only** be declared over by an IPAC/CD Nurse in conjunction with MHO



Ancillary and Support Staff: Housekeeping, Activity staff, Respiratory Technicians, IT/PT, Social Workers, Pharmacists, Stores, Laundry, Facilities Maintenance Staff – this list is not exhaustive

**Droplet Precautions** = Gowns, gloves and surgical grade masks (120 mmHg) with visors/eye protection are required if working within 2 metres (6 feet) of patients on Droplet Precautions

For those staff members whose job takes them occasionally to multiple areas (physiotherapy, occupational therapy, laboratory, FMO, etc), you should start your rounds in a non-outbreak area whenever possible and be vigilant in monitoring for symptoms.  
**The outbreak area should be your last stop**