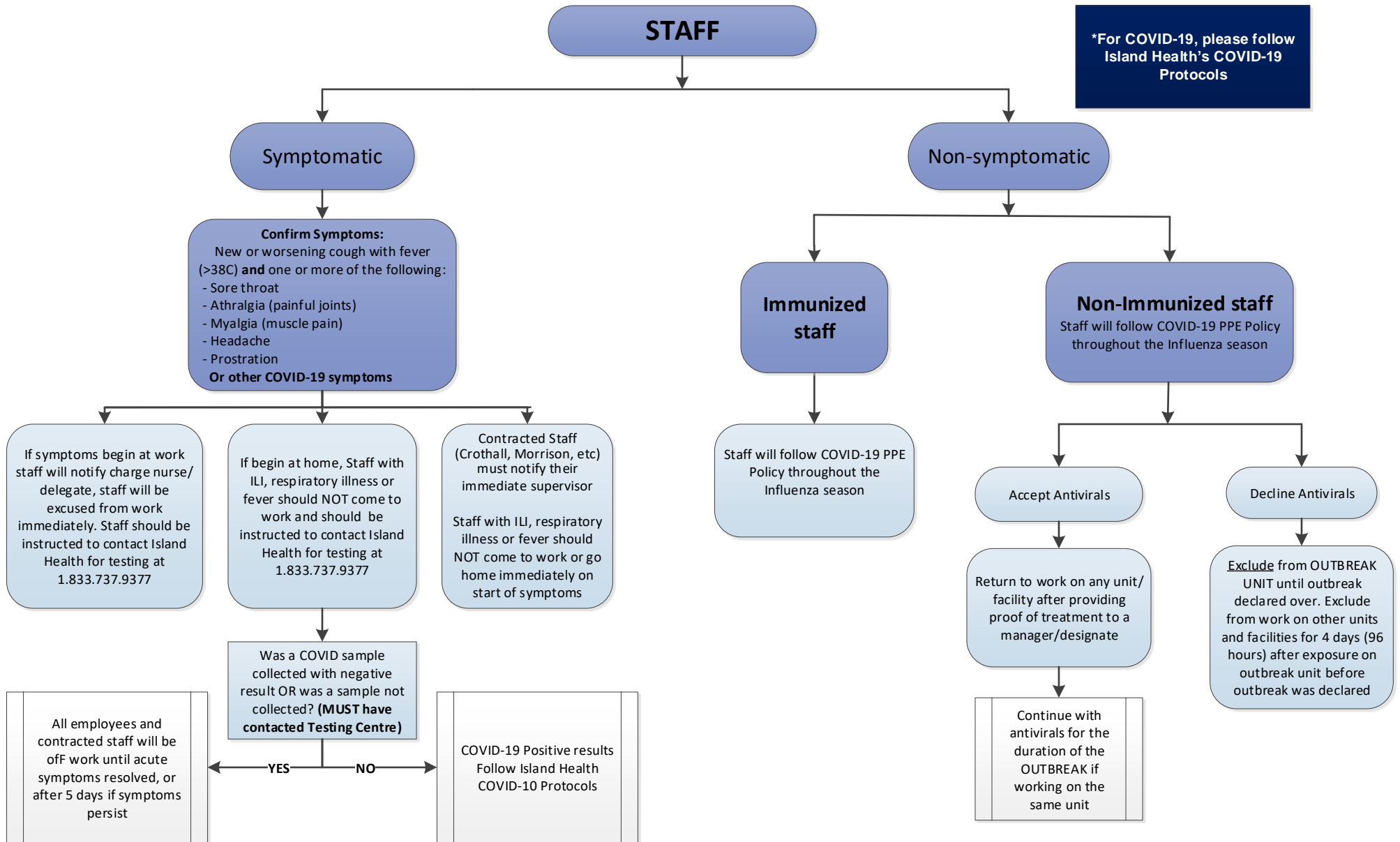


# Residential/Congregate Living for all Influenza Cases and During Outbreaks (NOT COVID-19)\* for Front Line Staff



PPE = Gowns, gloves and surgical grade masks (120 mmHg) with visors/eye protection are required if working within 2 metres (6 feet) of symptomatic patients

**Congregate Living** areas include: Affiliates, Mental Health and Addictions, Acute Rehab & Alternative Level of Care Units with dining and activity rooms

For those staff members whose job takes them occasionally to multiple areas (physiotherapy, occupational therapy, laboratory, FMO, etc), you should start your rounds in a non-outbreak area whenever possible and be vigilant in monitoring for symptoms. **The outbreak area should be your last stop**