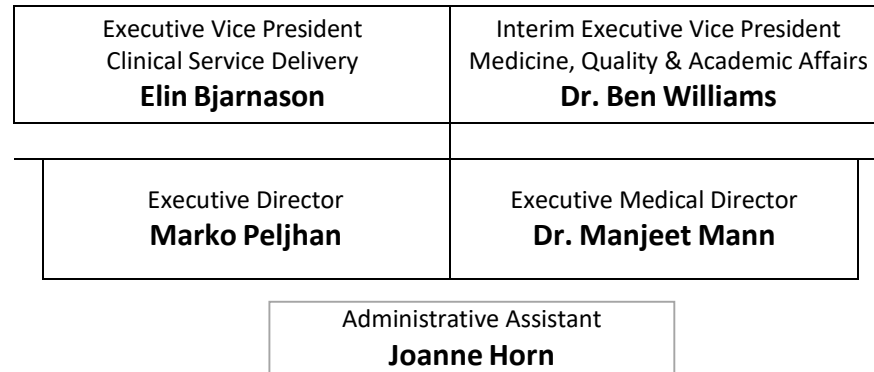


# Clinical Service Delivery Geography Breakdown

## Victoria Acute Hospitals, Brain Health, Heart Health, Restorative Health, Acute Utilization & Flow



### Clinical Operations – RJH

Jonathan Schmid, Director  
Dr. Brian Mc Ardle, Medical Director  
Jason Price, Interim RJH Site Director

### Heart Health

Ryan Davis, Regional Project Director  
Vacant, Medical Director

### Critical Care

Jonathan Schmid, Director  
Dr. Gordon Wood, Medical Director

### Restorative Health

Manpreet Khaira, Director  
Emily Coates, Project Director  
Dr. Paul Winston, Medical Lead

### Clinical Operations - VGH

Gillian Kozinka, Director  
Dr. Hayley Bos, Medical Director  
Trapper Edison, Site Director

### Brain Health

Gillian Kozinka, Director  
Dr. Kristen Attwell-Pope, Medical Director

### Hospital at Home

Laura Brown, Interim Director  
Cathy Wenger, Project Director

### Strategic Initiatives

Kerry Morrison, Director

### Acute Flow & Utilization

Matthew Erickson, Director  
Dr. Tracey Stephenson, Medical Director