

VICTORIA, ESQUIMALT/WESTSHORE HEALTH UNIT

SITE/BUILDING: EWHU (Esquimalt/West Shore Health Unit)

ADDRESS: Suite 102 - Entrance 1

940 Goldstream Avenue, Victoria BC, V9B 2Y4

TELEHEALTH CHECK IN:

If driving, please park at the back of the building. The entrance of the health unit is located in the rear of the main building (Entrance 1 – blue sign). Mention to the staff that you are here for a Telehealth appointment. They will direct you to the Telehealth room where the Telehealth equipment is located.

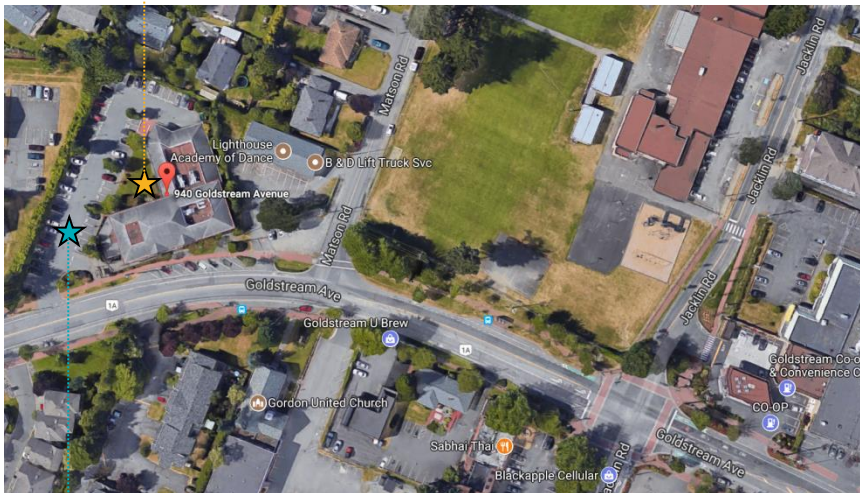


DO YOU HAVE ANY QUESTIONS?

Telehealth allows you to “meet” with your out-of-town health care provider using technology over our secure and private network. If you have any questions please call your health care provider who scheduled the appointment (e.g. BC Children’s and Women’s, UBC Hospital, BC Cancer Agency, etc.).

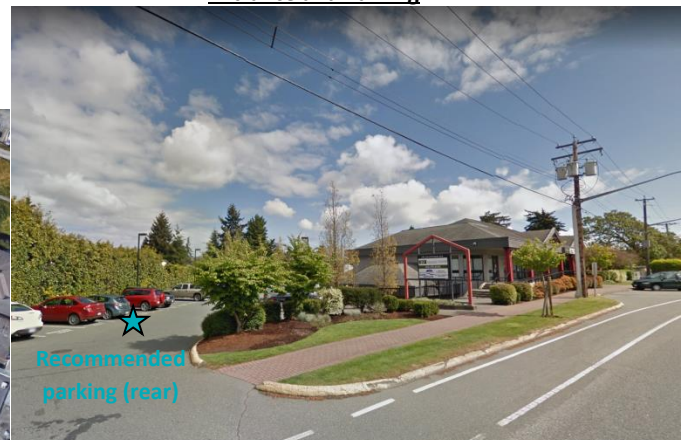
MAP OF SITE LOCATION:

EWHU - Suite 102 – Entrance 1 for Telehealth



EWHU entrance

Entrance and Parking



Main entrance of the Health Unit (in the rear of the building – Suite 102 – Entrance 1)

Telehealth Team

Tel: 250-519-1944 or local 11944

Telehealth@viha.ca

**Excellent care, for everyone,
everywhere, every time.**