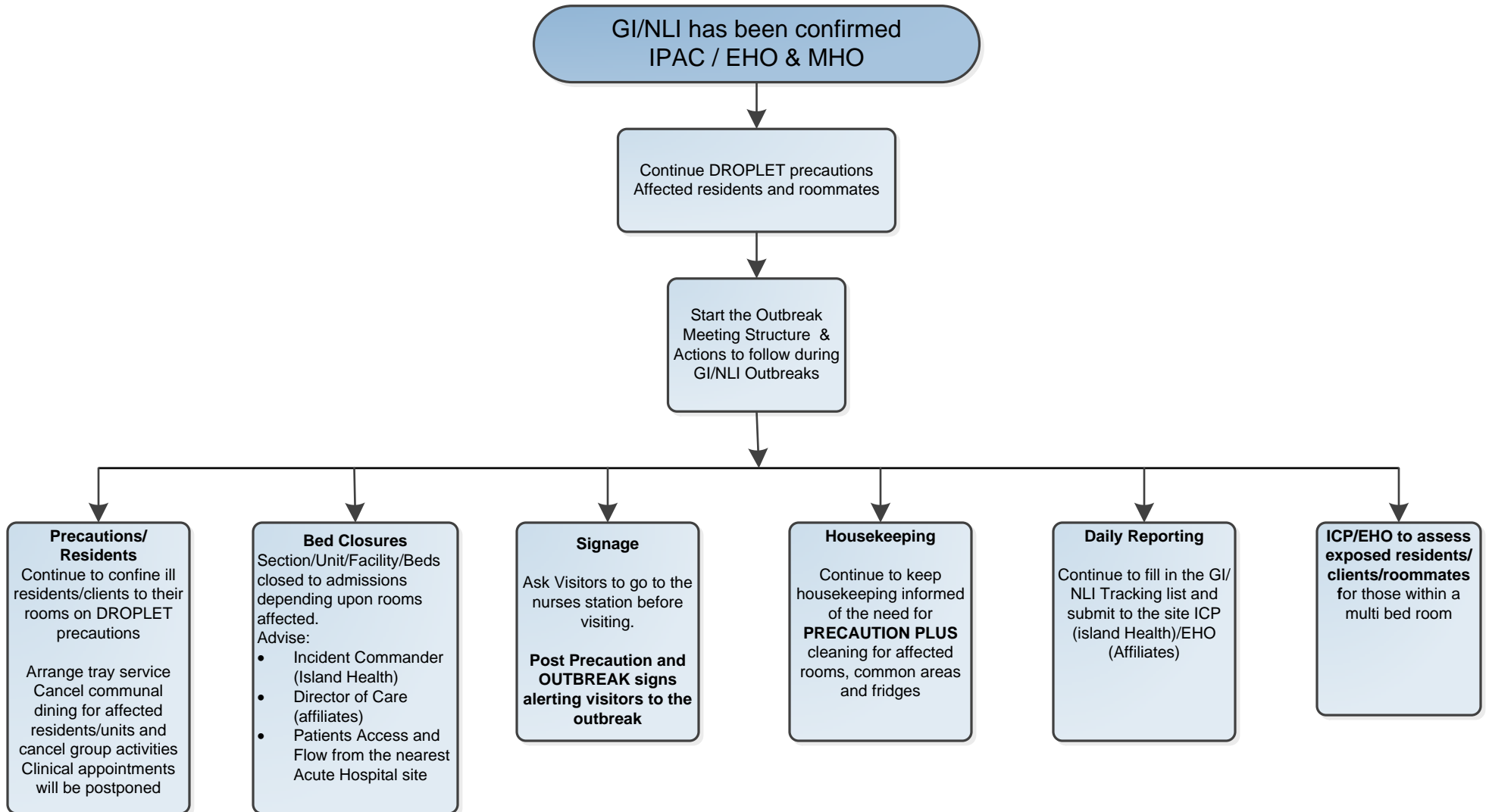


# GI/Norovirus Outbreak Restrictions Imposed in Residential/Congregate Living\*



**Please Note:** An GI/NLI outbreak identified in any residential/congregate living facility will only be declared over by an IPAC (with the MM)/EHO (in conjunction with MHO). GI/NLI outbreaks will be declared over either

- 4 days from the start of symptoms in the last patient or
- 2 days after the start of symptoms in a staff member.

**This time can be extended but not shortened by IPAC with the MM/EHO in conjunction with MHO.**

**Congregate Living** areas include:  
Affiliates, Mental Health and Addictions, Acute Rehab & Alternative Level of Care Units with dining and activity rooms