

community health facts 2013

Mount Waddington

Demographics

The Mount Waddington area (which encompasses the Vancouver Island North Local Health Area) is home to approximately 12,000 people.

- 24% identify as Aboriginal.
- 3.8% are aged 75 and over.
- The overall population is expected to decrease by 6% over the next 20 years.
- The population over age 75 is expected to triple by 2033, while the population under 20 is expected to decrease by 20%.

Health and Wellbeing

Compared to Island Health as a whole, Mount Waddington has (based on most recent data available):

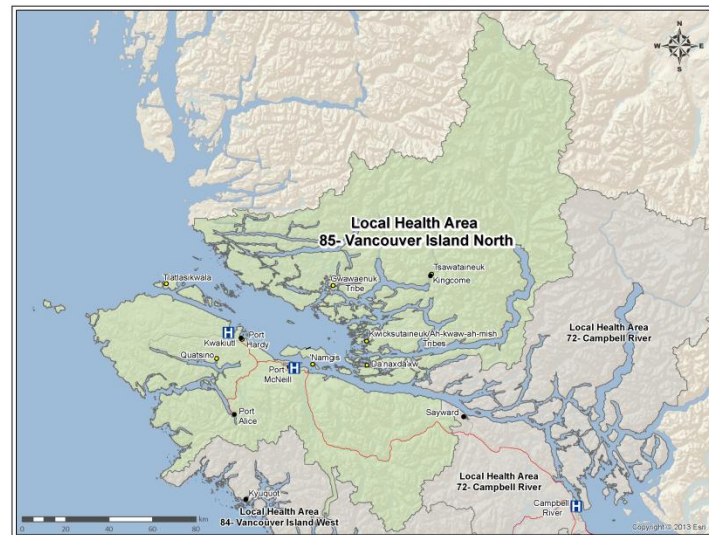
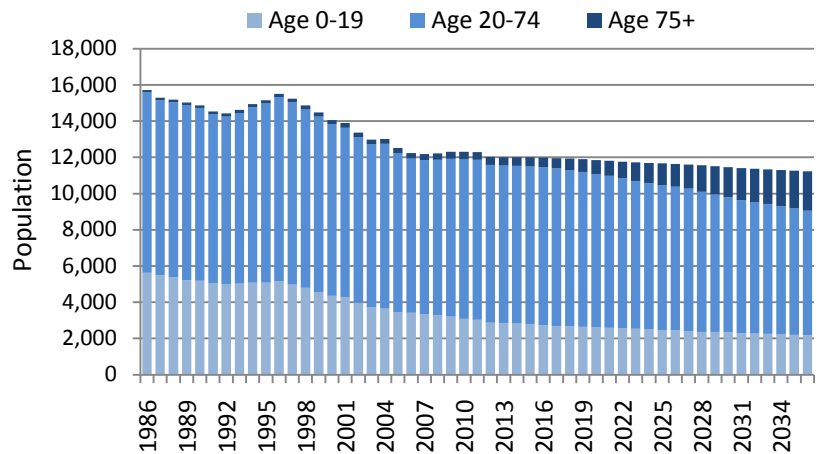
- A higher birth rate and a higher teen birth rate.
- A lower life expectancy (76 years).
- A higher rate of alcohol and tobacco-related hospitalizations.
- A higher age-adjusted mortality rate, with nearly twice the rate of deaths due to alcohol, illicit drug use, suicide, motor vehicle accidents, diabetes and lung cancer.
- Similar prevalence of leading chronic conditions including depression/anxiety, hypertension and asthma.

Social Determinants of Health

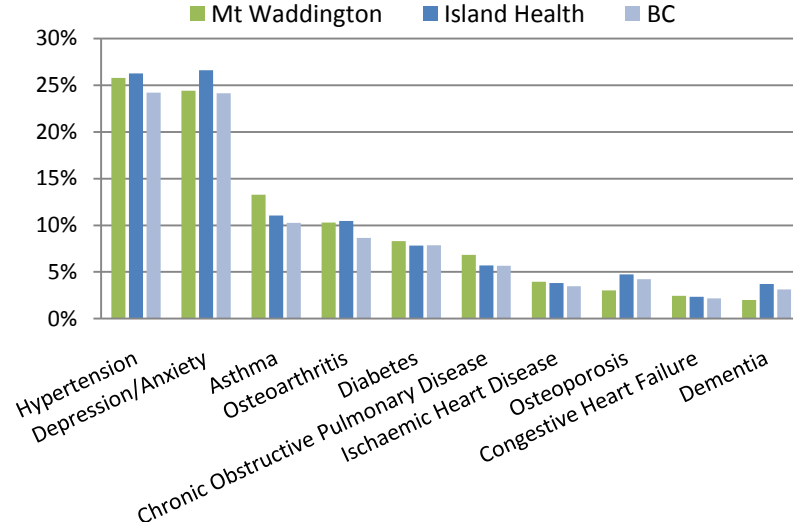
Housing, employment, education and social support can have a big impact on the health of our communities and our ability to make healthy lifestyle choices. Compared to Island Health overall (based on most recent data available):

- *Economic Wellbeing* – Mount Waddington has a higher percent of people on income assistance, employment insurance and a higher unemployment rate.
- *Education*– Mount Waddington has a lower percent of adults with high school certificate and a lower percent of 18 years olds graduating high school.

Mount Waddington Population Change



Prevalence of Chronic Conditions, 2010/11



Social Determinants of Health *(continued)*

- *Healthy Development* – Mount Waddington has a higher rate of children in care and children in need of protection, but a lower rate of non-cannabis juvenile drug offences.
- *Child Health* – Mount Waddington has a higher rate of respiratory disease hospitalizations and hospitalizations due to injury and poisoning among children.

Health Services

Mt. Waddington has three acute/urgent care centres: Port McNeill Hospital, Port Hardy Hospital and Cormorant Island Health Centre. There are five additional health centres and 31 residential care beds across 3 sites. Available services include public health, home and community care, and mental health and substance use.

Mt. Waddington has a higher than average use of hospital services – every year, residents have about 2,600 hospital admissions, and 11,300 unscheduled emergency department visits. This is likely related to the need to strengthen primary and community care services in the region.

Of the 2,600 admissions in 2011/12:

- 69% were to hospitals outside of Mount Waddington,
- 31% were to hospitals in Mount Waddington.

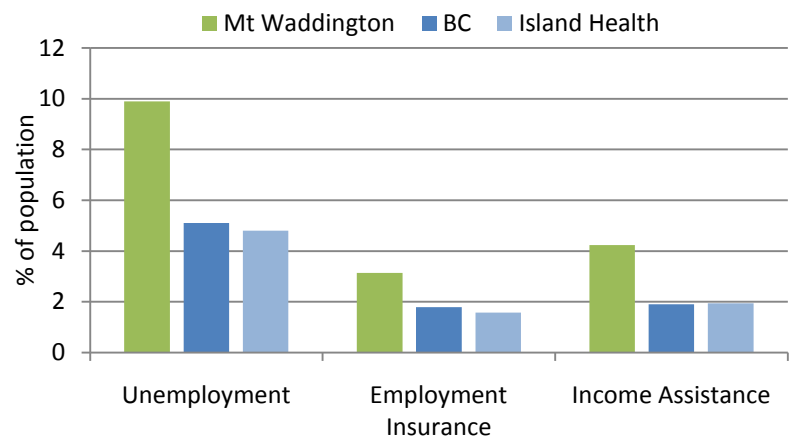
Of the 11,300 unscheduled emergency visits in 2012/13:

- 43% were to Port Hardy Hospital, 30% to Port McNeill Hospital, and 11% to Cormorant Island;
- 18% were for those over the age of 60.

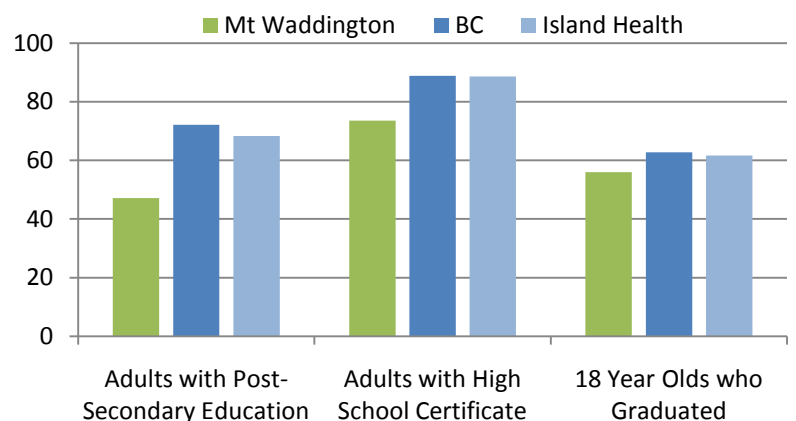
For more information on Island Health Services in your region, please visit:

<http://www.viha.ca/locations/>

Economic and Employment Statistics



Education Statistics



Vancouver Island West Resident Cases by Hospital

