

# Point of Care Risk Assessment (PCRA)

The point of care risk assessment (PCRA) is a routine practice which should be conducted before every patient/client/resident (hereafter 'patient') interaction by a trained health care worker (HCW) to assess the likelihood of exposing themselves and/or others to infectious agents. This assessment informs the selection of appropriate actions and Personal Protective Equipment (PPE) to minimize the risk of exposure. This is a general tool. The questions and actions may need to be adapted for specific health care settings and roles.

## 1 Before each patient interaction, an HCW must assess the following:



### THE PATIENT

- What are the patient's symptoms (e.g., frequent coughing or sneezing)?
- Does the patient require additional precautions (contact/droplet/airborne) for other diseases?
- What is the patient's health status (e.g., immunocompromised)?
- Is the patient able to practice respiratory etiquette and perform hand hygiene?



### THE TASK

- What type of task am I carrying out (e.g., providing direct face-to-face care, performing an aerosol generating medical procedure), coming into contact with body fluids, personal care, non-clinical interaction)?
- Am I trained, equipped and ready for the task?



### THE ENVIRONMENT

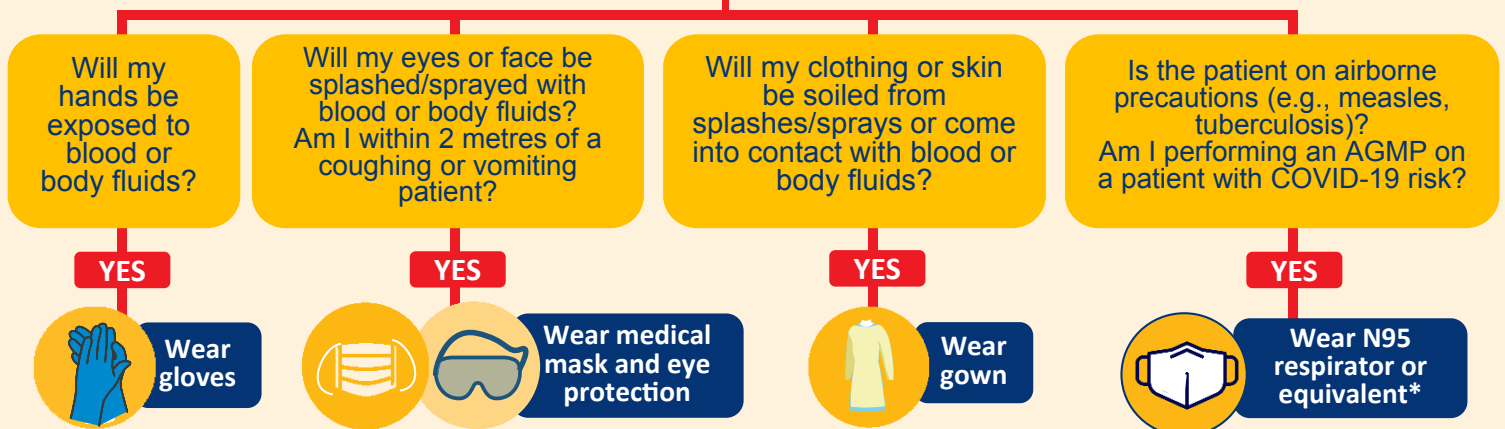
- Where am I doing my task?
- Is there triage or screening?
- Is the client in a separate room? Is the bathroom shared?
- Can physical distancing be maintained?
- Is there adequate environmental cleaning and disinfection?

## 2 Choose appropriate actions and PPE including the following:

- Hand hygiene** (e.g., before and after a task, before and after PPE use, before and after contact with patient).
- Respiratory etiquette** (e.g., support patient to cover their coughs with a tissue or their elbow).
- Patient separation** (e.g., prioritize the patient for a single room).
- Physical distancing** (e.g., encourage patient to maintain a 2 metre physical distance if direct care is not involved).
- Environmental and equipment cleaning and disinfection** (e.g., clean re-usable equipment between each use).
- Implement Additional Precautions if required** (e.g., Droplet and Contact precautions for COVID-19).
- Select appropriate pieces of PPE**, as below and per the [Island Health Mask Policy](#).

### Wear a mask according to the Island Health Mask Policy

#### Selecting PPE



\*HCW must be fit-tested and trained in performing the [aerosol-generating medical procedure](#) (AGMP).